

## CIMB Evergreen Index Fact Sheet

### General Information

<b>Report Date</b>	31 May 19	<b>Bloomberg Ticker</b>	CIMGEVGR <INDEX>	<b>Data Source</b>	CIMB Bank Berhad
<b>Inception Date</b>	06 Jun 02	<b>Pricing Frequency</b>	Daily	<b>Index Currency</b>	Euro
<b>Start Level</b>	100.0000	<b>Highest Level</b>	322.2655	<b>Return to Date</b>	144.15%
<b>Current Level</b>	244.1474	<b>Highest Level Date</b>	23 Jan 18	<b>Annualised RTD</b>	8.48%

### Index Information

- CIMB Evergreen Index tracks a wide range of markets across major economic regions and asset classes which adopts a Risk/Return Optimisation strategy by finding the best possible asset class allocations to maximise returns with controlled volatility (Standard Deviation) of around 10%.
- CIMB Evergreen Index also adopts a Long/Short strategy which proactively trades when markets are bullish or bearish.
- Basket of multi-assets are selected and may be substituted by CIMB Bank at its own discretion.

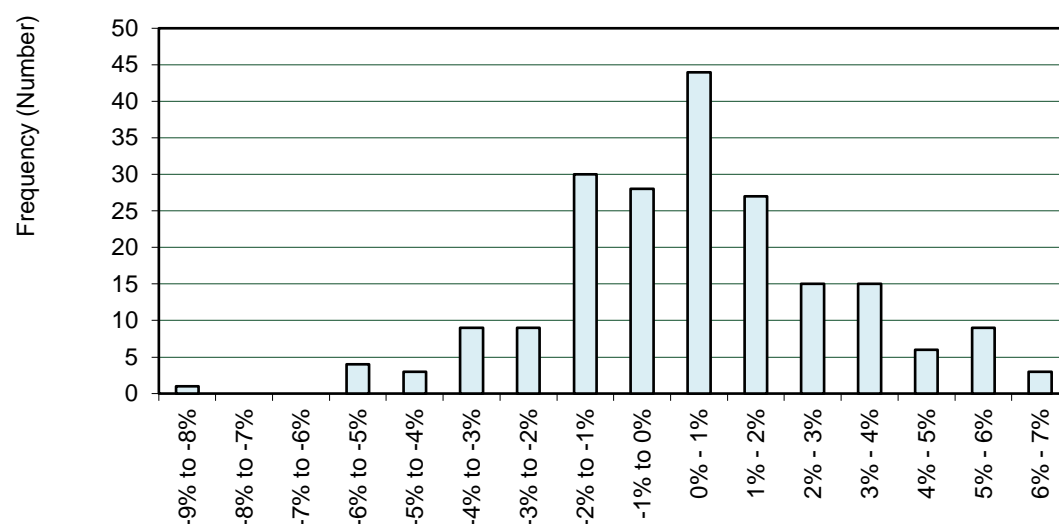
### Index Month-on-Month Historical Performance

Year	Jan	Feb	Mar	Apr	May	Jun	Jul	Aug	Sep	Oct	Nov	Dec	YTD	RTD
2019	-0.37%	-0.86%	1.94%	1.45%	-3.77%								-1.70%	144.15%
2018	4.13%	-5.63%	-2.00%	-0.90%	-0.30%	-1.59%	-0.14%	0.79%	-1.29%	-8.81%	-1.66%	-1.53%	-17.85%	
2017	0.61%	3.76%	-0.48%	-0.20%	0.88%	-1.45%	0.62%	0.12%	-1.54%	3.81%	0.00%	1.05%	7.26%	
2016	1.30%	0.67%	-1.14%	-1.72%	0.26%	0.80%	0.69%	0.70%	-0.17%	-1.06%	1.37%	0.80%	2.52%	
2015	4.26%	2.71%	2.76%	0.58%	1.34%	-3.21%	2.31%	-3.74%	0.72%	-4.27%	1.04%	1.29%	5.50%	
2014	-3.16%	4.46%	-0.90%	3.71%	1.45%	-0.16%	0.60%	2.85%	-1.84%	0.23%	0.36%	2.08%	9.79%	
2013	0.94%	3.32%	3.45%	3.17%	0.39%	-3.53%	-1.87%	-3.73%	3.99%	3.29%	0.50%	0.47%	10.45%	
2012	1.46%	0.88%	0.73%	-0.15%	-3.29%	-1.04%	2.15%	-0.42%	-0.58%	-1.66%	0.69%	-0.56%	-1.89%	
2011	-1.29%	2.22%	-4.49%	1.62%	-0.87%	-2.92%	1.58%	-3.07%	-0.86%	-2.91%	-2.80%	-0.56%	-13.67%	
2010	-1.13%	0.07%	5.88%	2.22%	-0.62%	-2.01%	-1.39%	-0.57%	0.00%	1.50%	1.82%	1.82%	7.59%	
2009	1.70%	1.90%	-2.21%	-2.24%	-3.42%	0.72%	-1.56%	-1.86%	0.89%	-1.56%	-0.58%	-1.26%	-9.22%	
2008	-5.03%	5.48%	-0.41%	0.06%	0.79%	5.63%	-0.52%	-2.63%	3.34%	1.25%	0.45%	-1.46%	6.60%	
2007	-0.47%	-1.47%	1.71%	2.36%	0.57%	-1.57%	-1.84%	2.19%	3.90%	5.13%	-2.50%	0.29%	8.29%	
2006	6.41%	1.90%	2.84%	0.19%	-5.89%	-0.18%	1.23%	-1.05%	0.18%	4.08%	3.48%	5.36%	19.50%	
2005	2.98%	3.60%	1.88%	0.99%	3.39%	6.26%	5.38%	-1.18%	6.76%	-4.30%	2.60%	3.71%	36.53%	
2004	0.98%	4.90%	0.87%	-5.44%	0.75%	1.80%	0.82%	0.40%	1.63%	1.50%	2.57%	0.55%	11.58%	
2003	5.60%	2.81%	-1.59%	-1.60%	1.78%	-1.91%	-0.45%	0.17%	-1.01%	4.49%	0.44%	5.51%	14.74%	
2002							1.45%	-0.51%	3.87%	-2.10%	-0.19%	5.11%	7.75%	

Performance based on month-end figures  
(Source: Bloomberg)

YTD = Year to date return  
RTD = Total return to date

### Distribution of Monthly Returns



### Risk Return Analysis

Since Inception	Annualised
CAGR	5.39%
Standard Deviation	10.71%
Sharpe Ratio	0.50

#### Note

- Compound Annual Growth Rate (CAGR) is the year-over-year growth rate of an investment over a specified period of time.
- Standard Deviation is used to measure the volatility or risk of the Index.
- Sharpe ratio is the measure of the excess return (or Risk Premium) per unit of risk in an investment asset.
- Risk Free Asset is 1 Month Euro Interbank Offered Rate (1M Euribor).

### Index Weightings

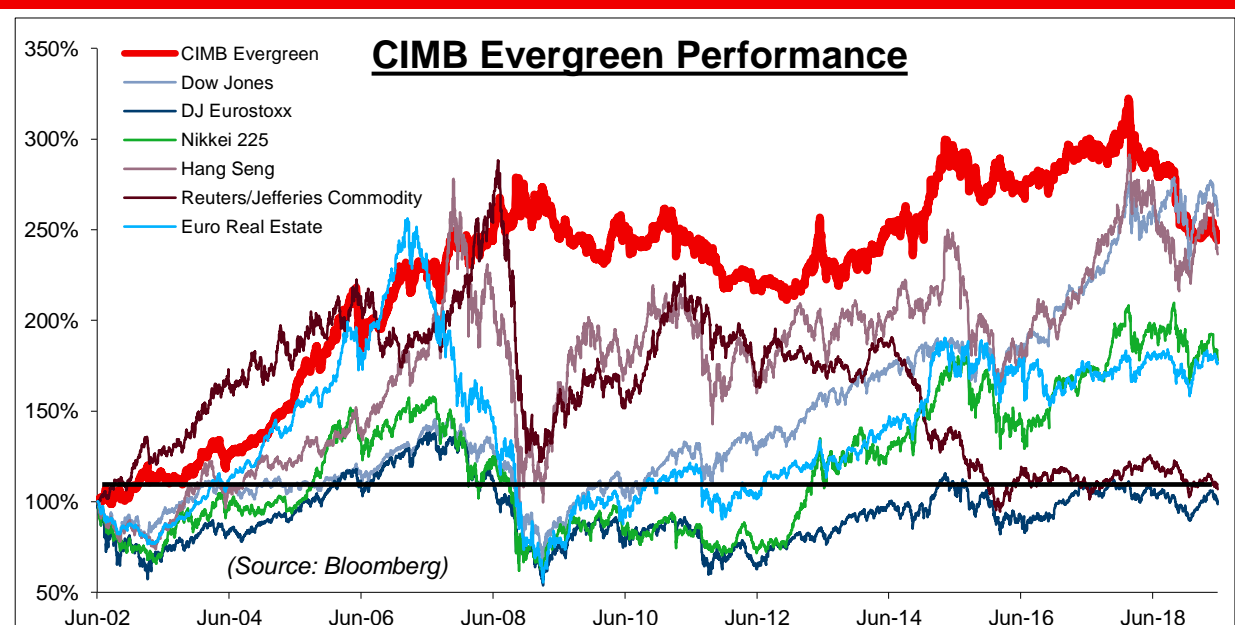
Underlying Asset	April Weightings	May Weightings
American Equity	-19.87%	-17.34%
Japanese Equity	15.89%	25.00%
European Equity	15.98%	20.48%
UK Equity	25.00%	25.00%
Emerging Market Equity	10.00%	10.00%
China Equity	10.00%	0.00%
Commodity Index	13.25%	9.14%
European Real Estate	25.00%	25.00%
American Real Estate	10.00%	10.00%
Hedge Fund Strategies	0.00%	-5.00%
Currency	-5.25%	-13.34%

Weightings are rebalanced monthly.

April Weightings were rebalanced on 25 Apr 2019

May Weightings were rebalanced on 30 May 2019

### Index Performance



(Source: Bloomberg)

#### CIMB Evergreen Index Disclaimer

The index sponsor or the calculation agent of the CIMB Evergreen Index (the "Index") does not guarantee the accuracy and/or completeness of the composition, calculation, publication and adjustment of the Index, any data included therein, or any data from which it is based, and the calculation agent and the index sponsor of the Index shall have no liability for any errors, omissions, or interruptions therein. The calculation agent and the index sponsor of the Index make no warranty, express or implied, as to results to be obtained from the use of the Index. The calculation agent and the index sponsor of the Index make no express or implied warranties, and expressly disclaim all warranties of merchantability or fitness for a particular purpose or use with respect to the Index or any data included therein. Without limiting any of the foregoing, in no event shall the calculation agent or the index sponsor of the Index have any liability for any special, punitive, indirect, or consequential damages (including loss of profits), even if notified of the possibility of such damages.

The information, analysis and discussions in this document are provided by the issuer for information purposes only. While all information in this document has been produced or compiled from sources believed to be reliable, the Issuer makes no representation as to its accuracy or completeness. Past results are not a guarantee, and are not indicative of future performance. Nothing in this document is to be construed as a solicitation or offer of legal, investment, tax or other advice or a recommendation to engage in any transaction. Neither CIMB Bank nor any of its affiliates will be responsible for any consequences of any reliance by the recipient on the information.